

# AgriPredict

SMART FARMING



CONFIDENTIAL

AGRIPREDICT |



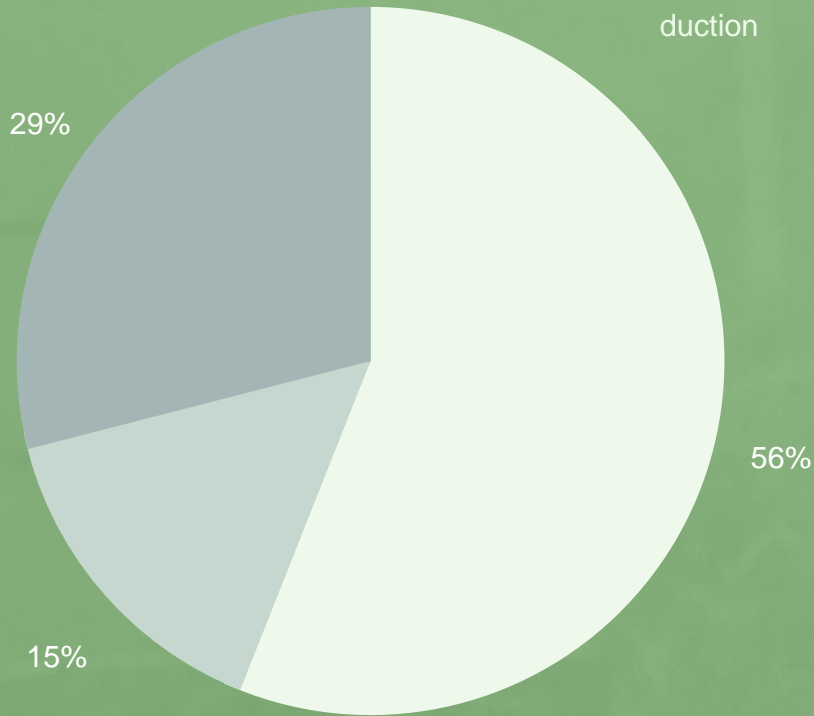
# ZAMBIA

## AGRI

## CLIMATE

low/no potential for agricultural production

Un-used medium to high potential for agricultural production



Used Land

Overall Zambian territory  
(752,000 km<sup>2</sup>)



ZAMBIA

AGRI

CLIMATE

Small scale farmers produce **80%**  
of food requirements in Zambia



Inadequate agricultural inputs



Lack of consistent yields



Crop disease and infestation



The shortage of domestic affordable capital









EXTENSION  
SERVICES

EARLY  
WARNING  
SYSTEM

AGRICULTURAL  
INFORMATION

AGRIPREDICT SERVICES

DISEASE  
DETECTION

MARKET  
PLACE

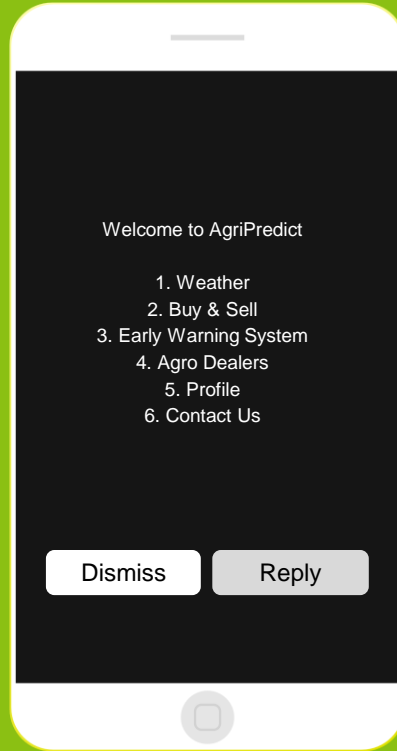
WEATHER

AGRI  
SERVICES



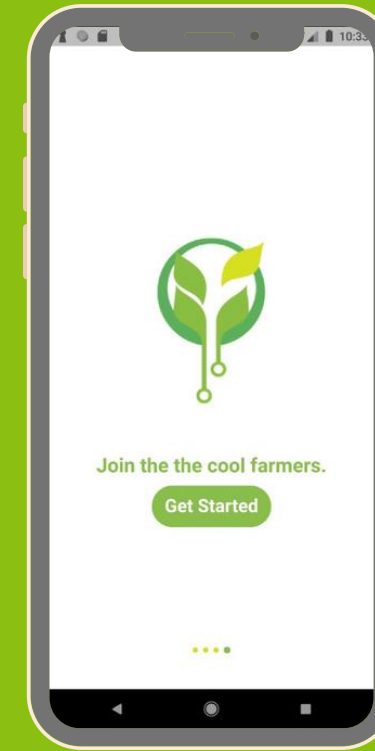
# USER ACCESS

---



## USSD PLATFORM

Version 3 Launched: September 2022



## MOBILE APPLICATION

Beta Version Launched: August 2022  
Full Roll-Out Expected: January 2023

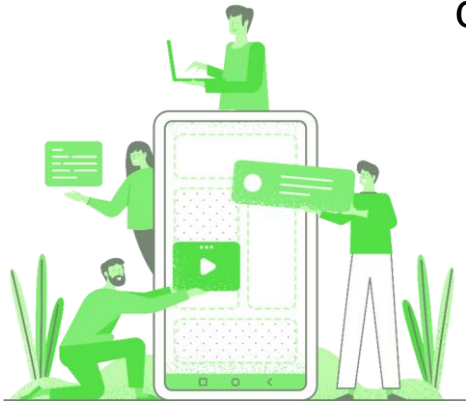


# DEVELOPMENT PROCESS

---



Understand farmers' challenges and opportunities. Interact with farmers directly and track usage patterns of AgriPredict products



Develop tools to address and respond to farmer needs

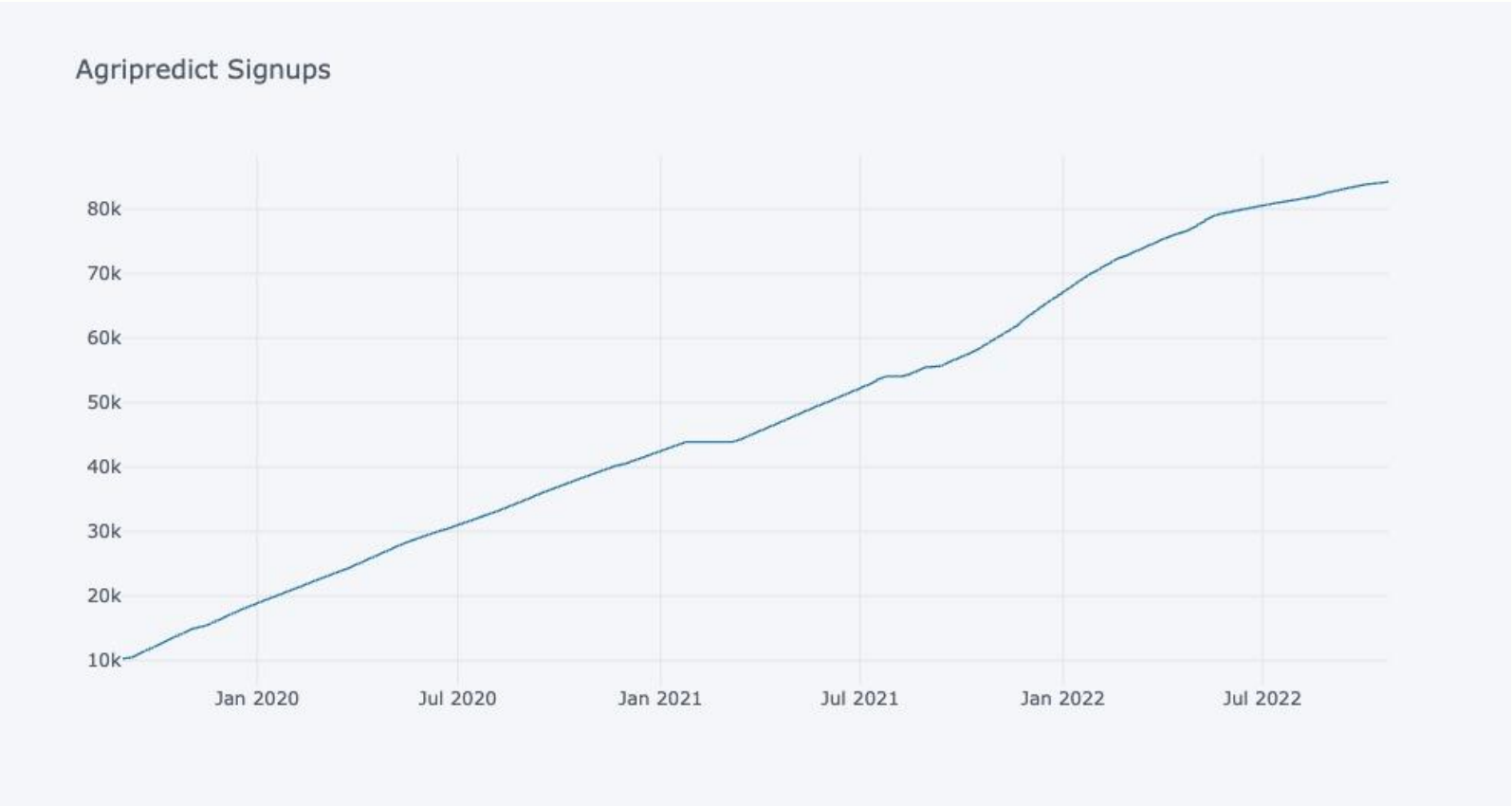


Release updates



# GROWTH RATE

---



Close to 90 000 registered on the platform

Users in ALL Provinces across Zambia







THANK YOU!

